

# Girder Assembly and Installation for Diamond-II

Claire Gibbison  
Dibyagyan Das

# Introduction

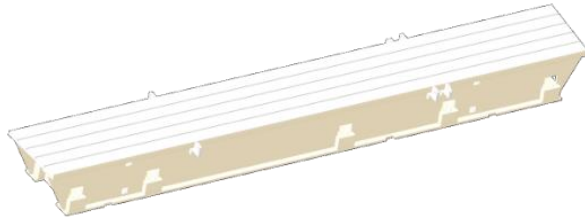
- Girder Assembly will run from July 2026 to August 2027 onsite in the specifically developed Diamond Extension Building
- 3 month contingency before the Dark Period starts in December 2027
- Dark Period will run for 1½ years until June 2029



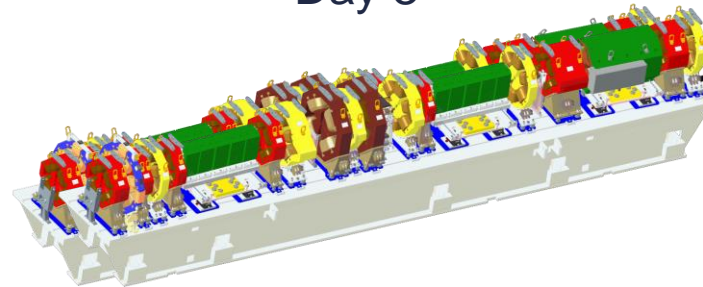
# Girder Assembly

- Ordering magnets March 2024 starting with Quadrupoles
- Mock up of the girder assembly from November 2025 through to January 2026
- Main girder assembly from July 2026 through to end of August 2027 totalling 48 girders

Day 1



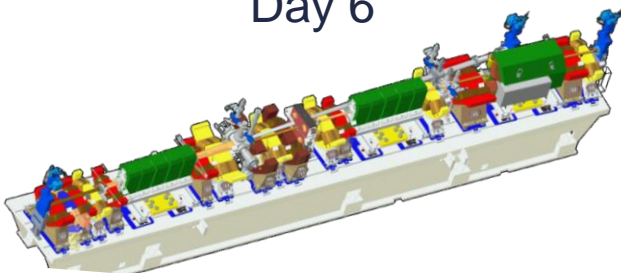
Day 3



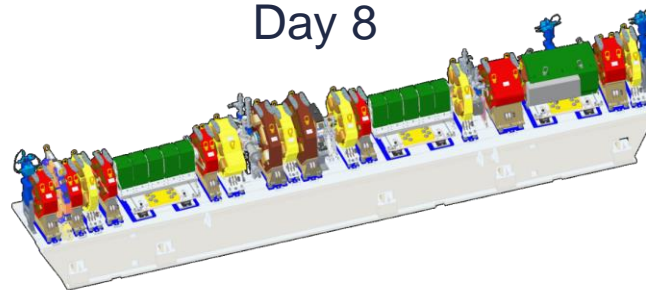
Day 5



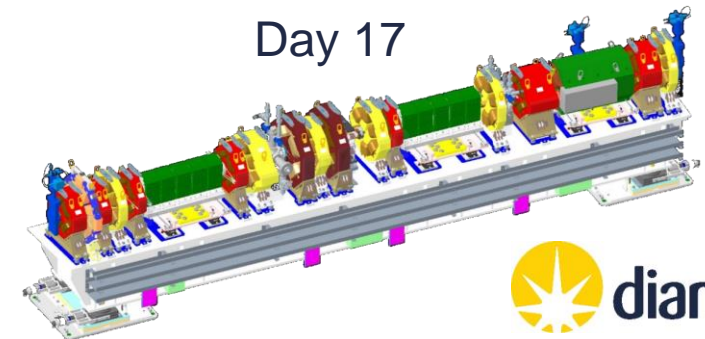
Day 6



Day 8

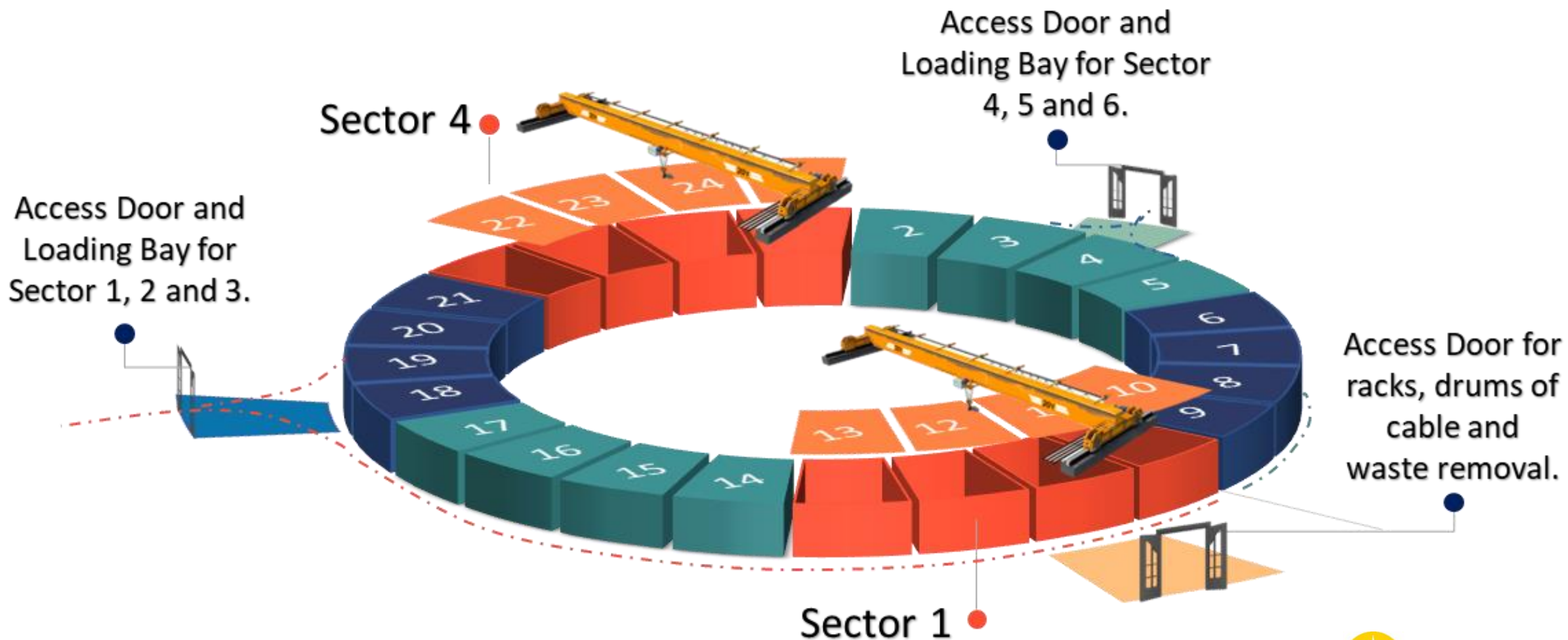


Day 17



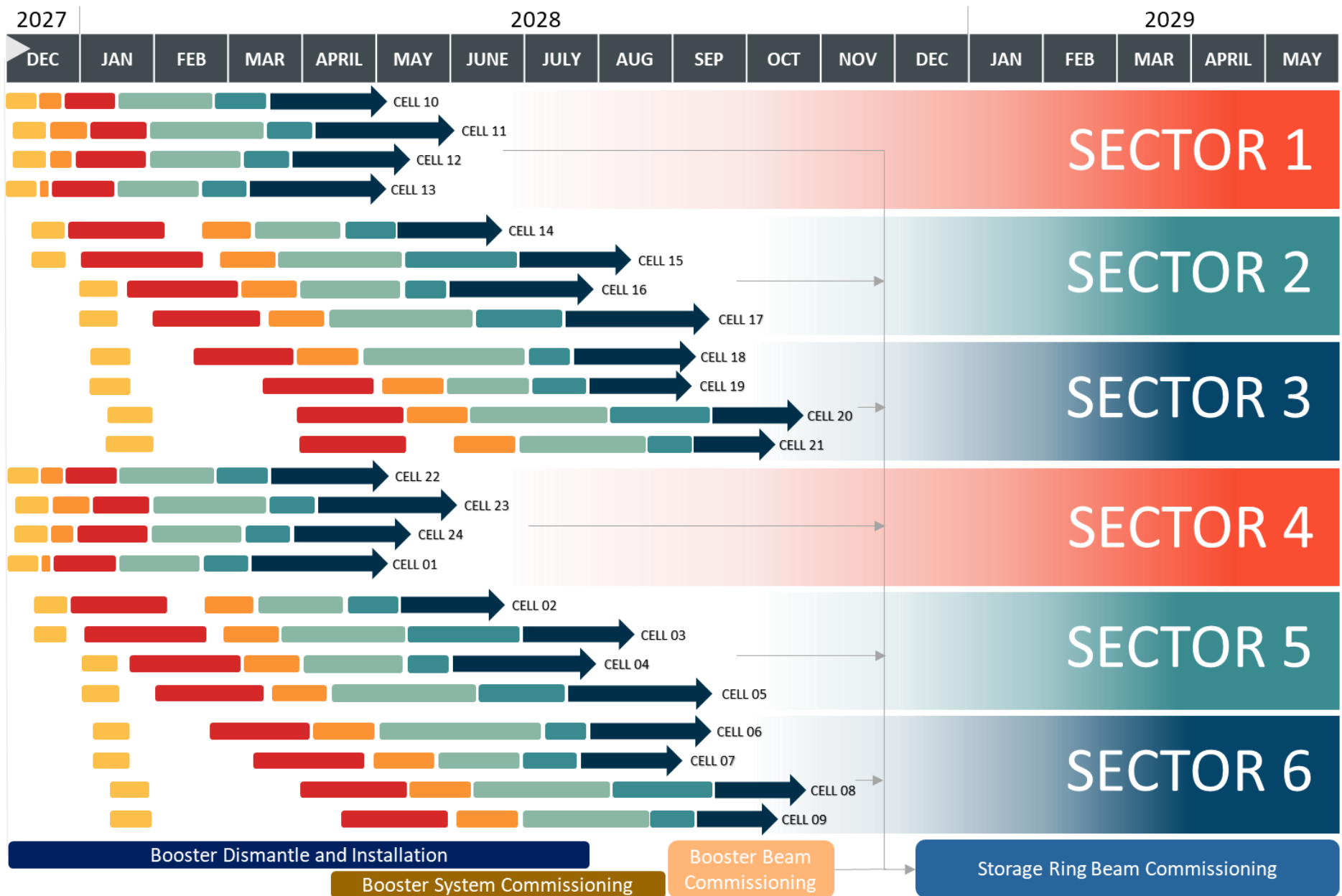
# Dark Period Installation

Sector 1 & 4 ■ Sector 2 & 5 ■ Sector 3 & 6 ■





# Dark Period Installation



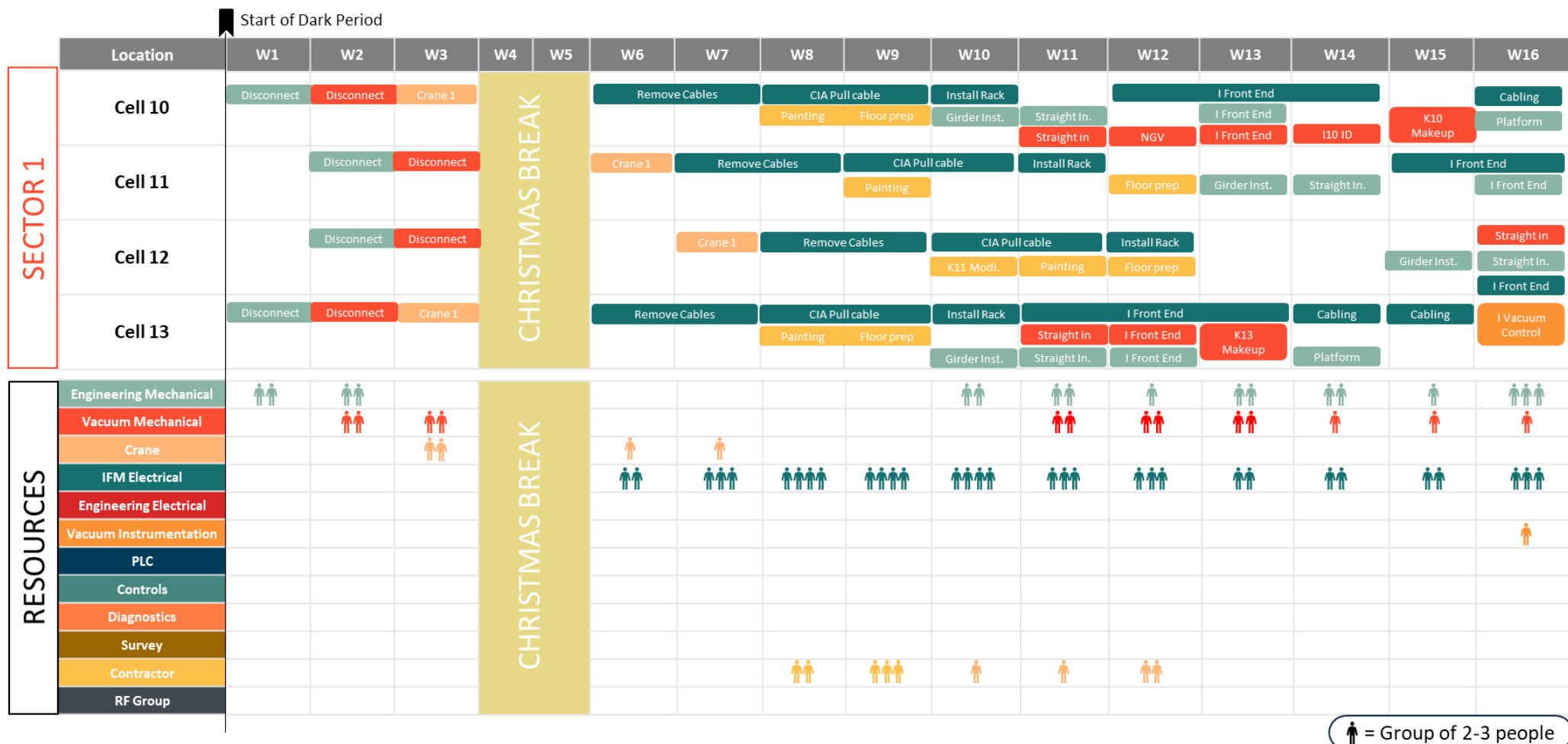
## Legends

- Disconnect
- Lift Equipment
- Cable Removal
- Installation
- Cable Installation
- System Commissioning



# Resources

- Export MS Project Plan into Excel
- Analysing resource peaks at 1 week resolution
- Able to move resources to smooth peaks



# Discussion

- Next step to take the 8,000 task Dark Period plan and add more detail to capture small tasks done by resource groups
- Export this data to Excel to analyse resource at a 1 day resolution to check for peaks
- We are looking for ideas on the best way to track progress during the Dark Period and how to best alter plans and communicate changes when the unexpected happens.